



FOOD



MEDICAL



SPECIALIST

CONTROL OF THE COLD CHAIN



Integrated insulated cargo area for

# VOLKSWAGEN T6



**Designer and manufacturer of  
integrated insulated cargo areas**

Trimat has designed an insulated range for professionals, combining functionality, aesthetics and long life.



## INTEGRATED INSULATED CARGO AREA FOR VOLKSWAGEN T6

### The various Iso-Kit fitting-out configurations

Reference	Name
EKI0114	Iso-KIT insulation T6 L1H1 with right side door - flat roof
EKI0115	Iso-KIT insulation T6 L1H1 without right side door - flat roof
EKI0116	Iso-KIT insulation T6 L1H1 with right side door - semi-recessed roof
EKI0117	Iso-KIT insulation T6 L1H1 without side door - semi-recessed roof
EKI0118	Iso-KIT insulation T6 L2H1 with right side door - flat roof
EKI0119	Iso-KIT insulation T6 L2H1 without right side door - flat roof
EKI0120	Iso-KIT insulation T6 L2H1 with right side door - semi-recessed roof
EKI0121	Iso-KIT insulation T6 L2H1 without right side door - semi-recessed roof

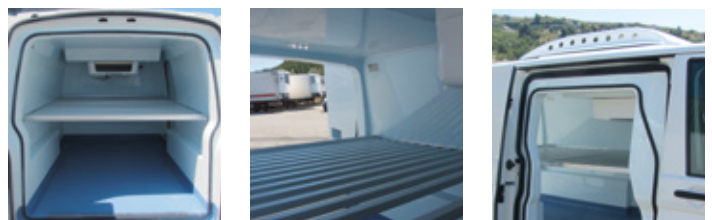
### Dimensions

	T6 L1H1	T6 L2H1
Interior length	2.24 m	2.64 m
Interior width	1.40 m	1.40 m
Between wheel arches	1.20 m	1.20 m
Interior height	1.21 m	1.21 m
Volume	3.48 m <sup>3</sup>	4.34 m <sup>3</sup>



### Mounting and fairing for refrigeration unit

Reference	Name
EKI0122	Semi-recessed mounting VWT6
EKI0123	T6 Aérotop semi-recessed mounting and fairing



### Characteristics

**IR: Enhanced Insulation with or without side door**

- Cemafruid Certification No. D14/001
- Antibacterial food-grade gelcoat
- Water drain with stainless-steel grating
- Ceiling light (watertight as an option)
- Aluminium door sills



### OPTIONS AND ACCESSORIES

Customisation and multiple accessories as an option  
(shelves, plinths, aluminium floor, mounting and fairing...)  
**Please ask us.**